

1



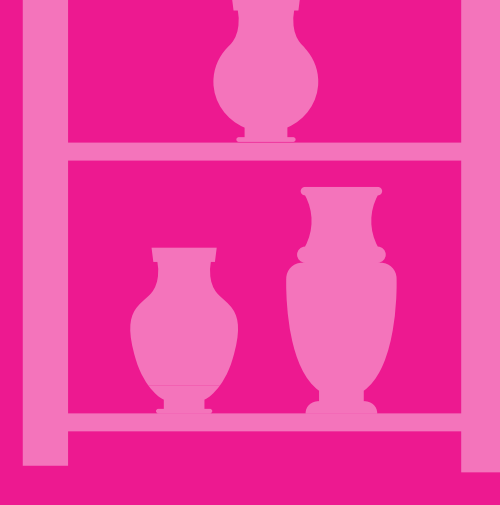
Preparing for Travel

2



Creating a Safe Environment at Home

3



Selecting a Storage Facility

4



Monitoring the Value of the Collection

5

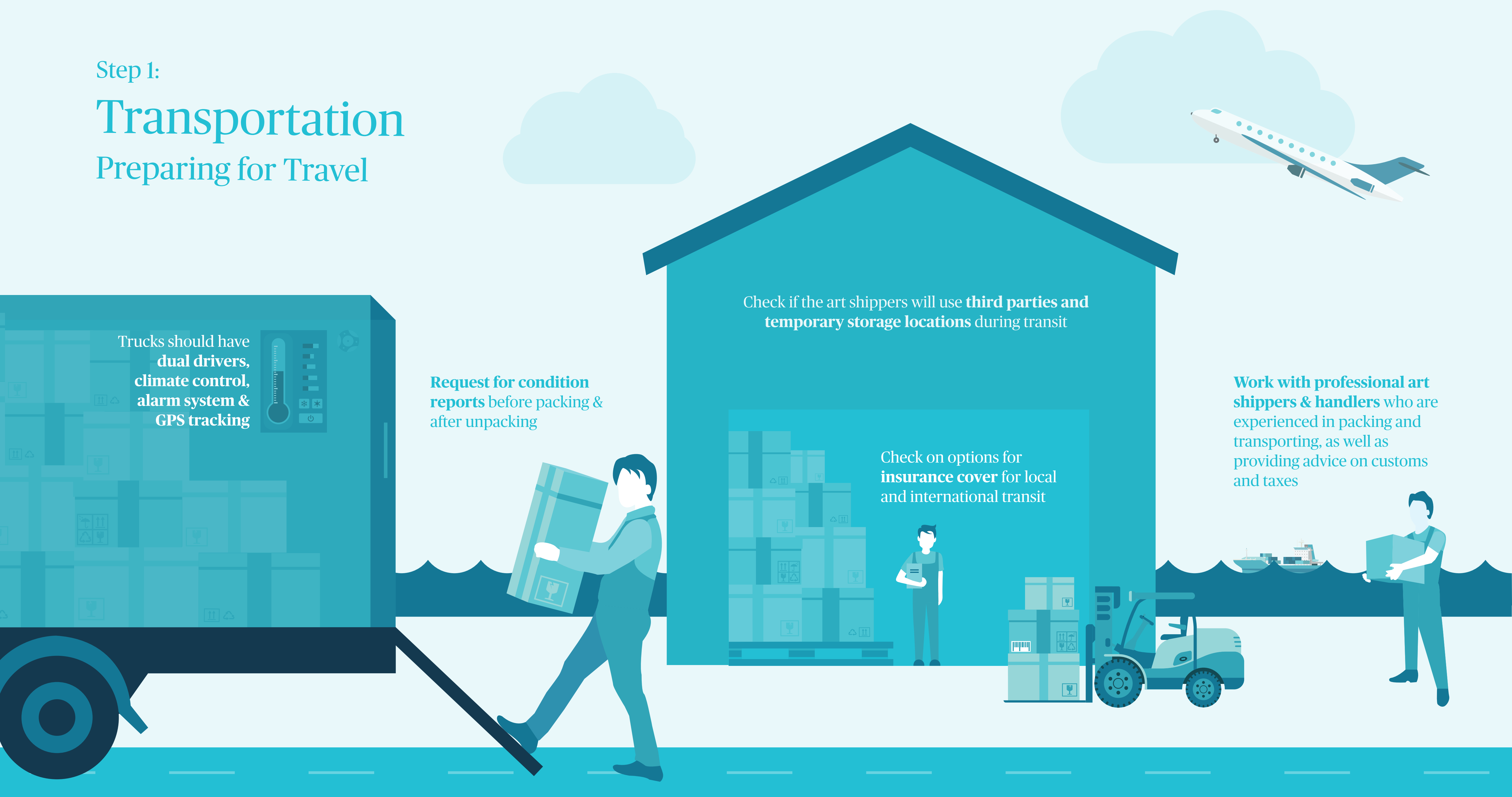


Keeping an Inventory

Step 1:

Transportation

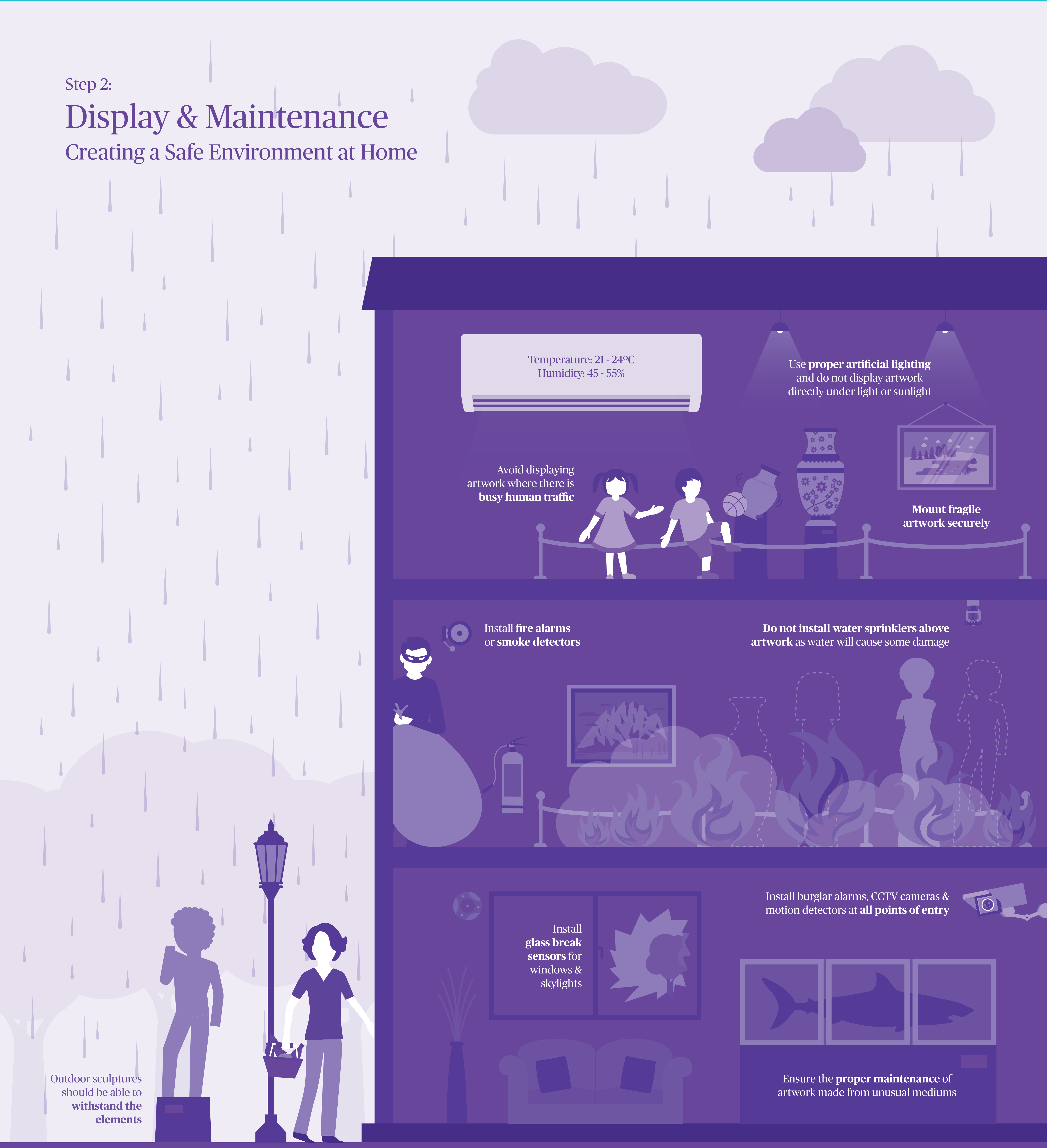
Preparing for Travel



Step 2:

Display & Maintenance

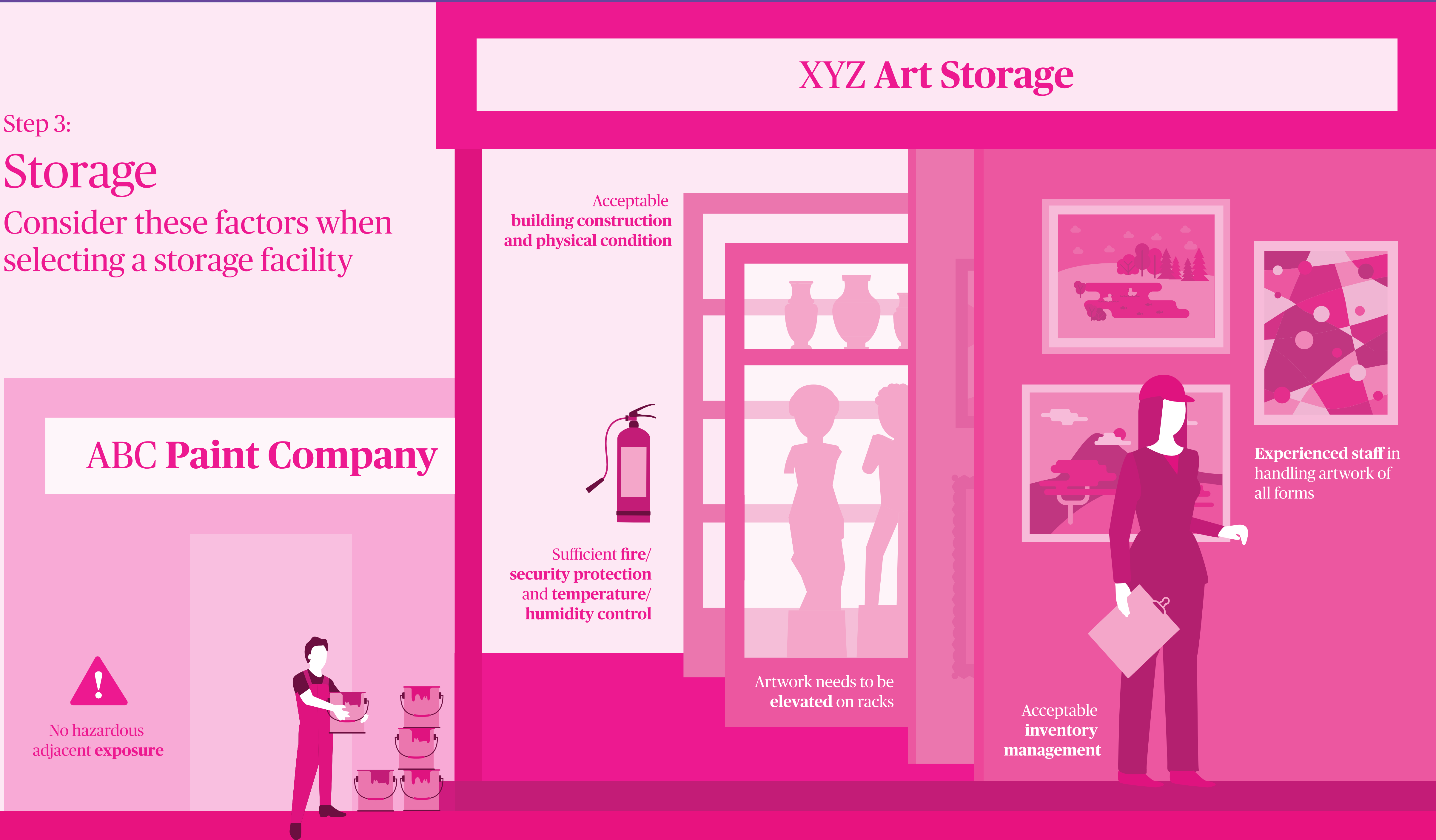
Creating a Safe Environment at Home



Step 3:

Storage

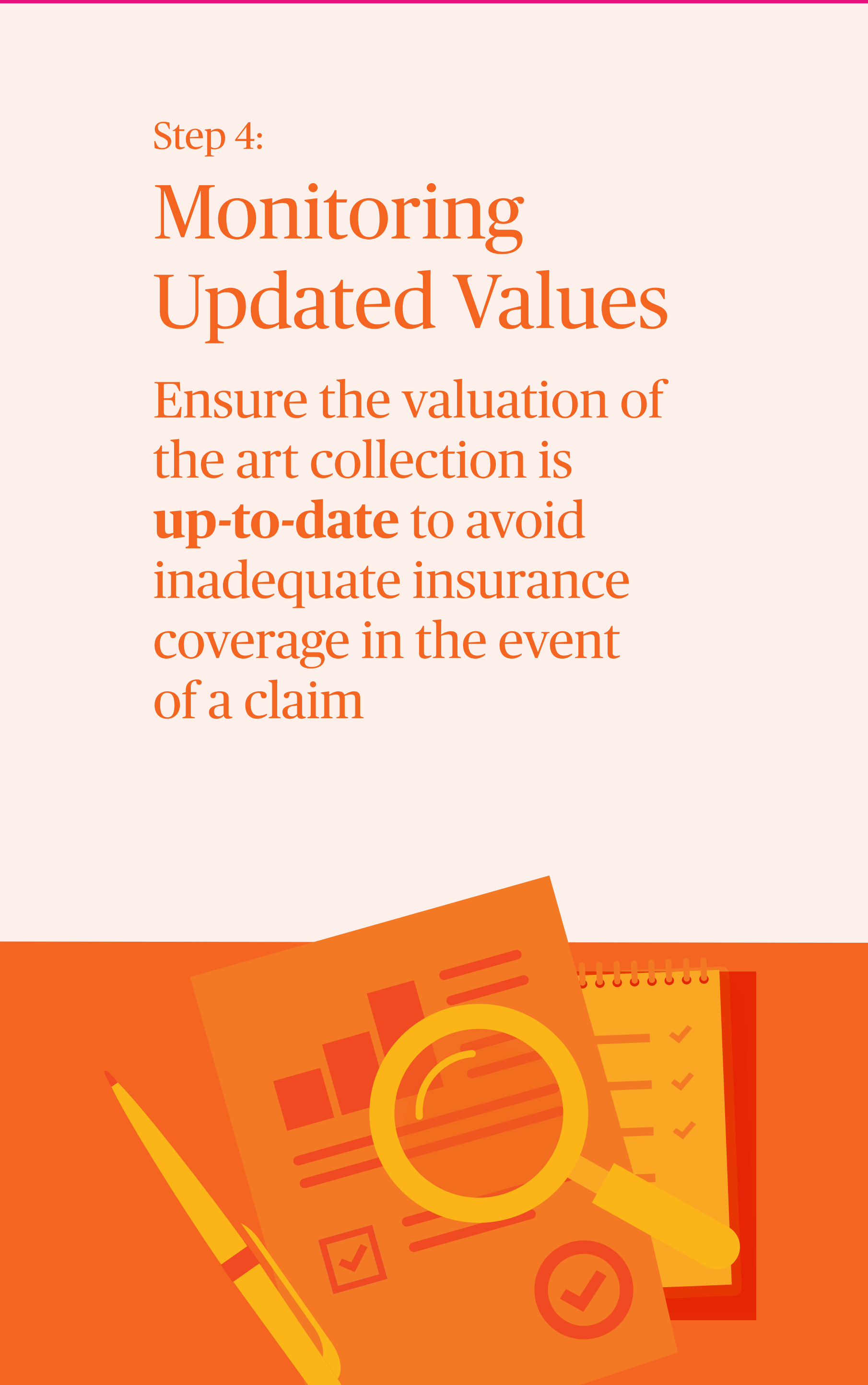
Consider these factors when selecting a storage facility



Step 4:

Monitoring Updated Values

Ensure the valuation of the art collection is **up-to-date** to avoid inadequate insurance coverage in the event of a claim



Step 5:

Database

Keeping an inventory

